



* Technical data and features subject to change without notice

Pumping unit technical data

		HP1808ECX	HP1608EC	HP1606H
Max. theoretical output	m ³ /h	180	160	160
Max. pressure on concrete	bar	83	80	53
Concrete cylinders (diam. x stroke)	mm	260 x 2100	230 x 2100	230 x 2100
Concrete hopper capacity	l	600	550	550
Hydraulic circuit		closed	closed	open

Total weight less than 38 tons, payload to the user always available.

Super compact machine mounted on 8x4 6350* wheelbase trucks for excellent maneuverability.

Contained stabilisation dimensions for easy placement in all types of job sites.

Control System with pumping unit HP1608EC/HP1808ECX

Smartronic Silver

Integrated color LCD

Counters

Pumping unit management

Diagnostics

Capsense rear panel

Optional Smartronic Gold



The automatic continuous verification of the center of gravity of the machine guarantees the maximum safety of boom movement and the maximum possible coverage of the job area, even with partial opening of the stabilization.



MBE
Maximum boom extension control



Automatic RPM Management

Control System with pumping unit HP1606H

Easytronic Silver

Integrated color LCD

Counters

Pumping unit management

Diagnostics

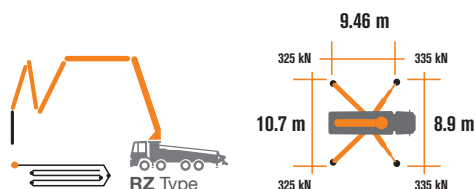
Optional Easytronic Gold



Lsc Safe boom operation is guaranteed when two, three or four outriggers are fully opened.



Automatic RPM Management



Placing boom technical data

		B5RZ 50/44
Pipeline diameter	mm	125
Max. vertical reach	m	49.1
Max. horizontal distance (from center of slewing axis)	m	43.9
Min. unfolding height	m	14
Sections number		5
1st section opening angle		90°
2nd section opening angle		180°
3rd section opening angle		180°
4th section opening angle		254°
5th section opening angle		180°
Rotating angle		+/-270°
End hose	m	3



STEELTECH Series K50L

Standard Equipment

Front "X" style diagonal outriggers with double telescopic opening and swing-out rear outriggers

Driven by PTO or gear box

Boom control by means of "Load Sensing" proportional distributor

Safety device upon opening of concrete discharge door and hopper grille

Emergency device for pumping group

2 Hetronic proportional radio controls with 3 manipulators

Emergency radio control cable 20 m

Plastic water tank with 600-litre capacity

Medium pressure water pump (50 l/min - 50 bar)

LED lights for stabilisation and hopper lighting

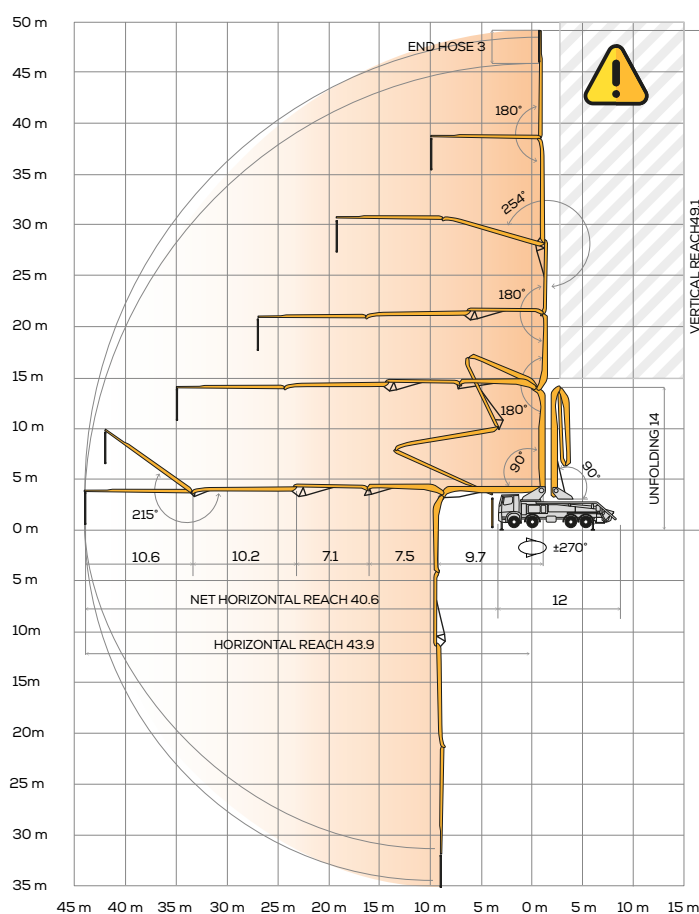
Double layer piping with chromium carbide inserts on the entire piping line

Washing accessories

High resistance of the components most subject to wear ("S" valve, wear plate, compensating ring)

Declaration of conformity supplied with the user and maintenance manual

Distribution boom B5RZ 50/44



Main Options

Smartronic Advanced: In addition to the Smartronic Gold functions, provides ASC2.0 stability control, ABC boom oscillation control (Antibouncing), automatic boom opening and closing. Includes radioremot control Hetronic or HBC with display

Automatic boom opening and closing

Centralized boom lubrication system

Concrete shut-off valve

High pressure water pump 28l / 120 bar

Radio remote control: Hetronic or HBC equipped with display

Wide choice of customer personalization colours

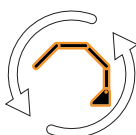
***Over 100 options available; details available on truck pumps optional booklet**



**Advanced
Stability Control
2.0**



Antibouncing



**Boom Automatic
Opening and Closing**

Video Smartronic

