

* Technical data and features subject to change without notice

Pumping unit technical data

		HP16o8EC	HP18o8ECX
Max. theoretical output	m ³ /h	160	180
Max. pressure on concrete	bar	80	83
Concrete cylinders (diam. x stroke)	mm	230 x 2100	260 x 2100
Concrete hopper capacity	l	550	600
Hydraulic circuit		closed	closed

Total weight less than 32 tons, payload to the user always available.

Super compact machine mounted on 8x4 5450* wheelbase trucks for excellent maneuverability.

Contained stabilization dimensions for easy placement in all types of job sites.

Control System

Smartronic Gold

ASC Advanced stability control
MBE Maximum boom extension control
Auto RPM engine speed adjustment
Working ramps kit for the pumping unit
LCD monitor
Counters
Pumping unit management
Diagnostics
Rear capsense control panel

ASC is standard equipment



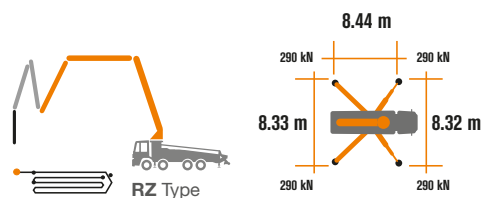
The automatic continuous verification of the centre of gravity of the machine guarantees the maximum safety of boom movement and the maximum possible coverage of the job area, even with partial opening of the stabilisation.



MBE
Maximum
boom extension
control



**Automatic
RPM
Management**



Placing boom technical data

		B5HRZ 47/43
Pipeline diameter	mm	125
Max. vertical reach	m	46.1
Max. horizontal distance (from center of slewing axis)	m	41.4
Net horizontal reach	m	38.6
Min. unfolding height	m	8.9
Sections number		5
1st section opening angle		90°
2nd section opening angle		180°
3rd section opening angle		180°
4th section opening angle		237°
5th section opening angle		230°
Rotating angle		+/-270°
End hose	m	3



CARBOTECH Series K47H

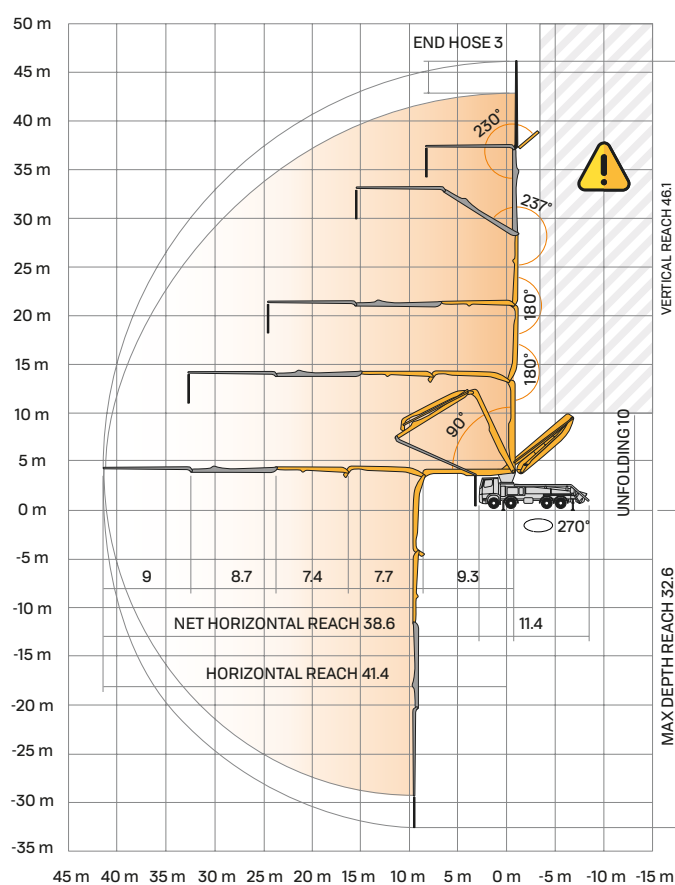
Standard Equipment

Section I, II and III made of high strength steel
 Section IV, V made of light in carbon fiber
 Front "X" style diagonal outriggers with double telescopic opening and swing-out rear outriggers for a quick and easy set-up also in narrow areas
 Driven by PTO or gear box
 Boom control by means of "Load Sensing" proportional distributor
 Safety device upon opening of concrete discharge door and hopper grille
 Emergency device for pumping group
 2 Hetronic proportional radio controls with 3 manipulators
 Emergency radio control cable 20 m
 Plastic water tank with 600-litre capacity
 Medium pressure water pump (50 l/min - 50 bar)
 LED lights for stabilisation and hopper lighting
 Double layer piping with chromium carbide inserts on the entire piping line
 Washing accessories
 High resistance of the components most subject to wear ("S" valve, wear plate, compensating ring)
 Declaration of conformity supplied with the user and maintenance manual

Main Options

Smartronic Advanced: In addition to the Smartronic Gold functions, provides ASC2.0 stability control, ABC boom oscillation control (Antibouncing), automatic boom opening and closing. Includes radio remote control Hetronic or HBC with display
 Automatic boom opening and closing
 Centralized boom lubrication system
 Concrete shut-off valve
 High pressure water pump 15l / 150 bar
 Radio remote control: Hetronic or HBC equipped with display
 Straight concrete piping on double layer boom with high wear-resistance chromium carbide inserts CIFA LLT Long Life Top
 Wide choice of customer personalization colours
 *Over 100 options available; details available on truck pumps optional booklet

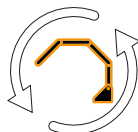
Distribution boom B5HRZ 47/43



**Advanced
Stability Control
2.0**



Antibouncing



**Boom Automatic
Opening and Closing**

Carbon Fiber Video



Smartronic Video



Product Video

