



4200 / 4500\*

10205\*

\* Technical data and features subject to change without notice

### Pumping unit technical data

		HP16o8EC	HP16o6H
Max. theoretical output	m <sup>3</sup> /h	16o	16o
Max. pressure on concrete	bar	8o	53
Concrete cylinders (diam. x stroke)	mm	230 X 2100	230 X 2100
Concrete hopper capacity	l	55o	55o
Hydraulic circuit		closed	open

**Total weight less than 26 tons, payload to the user always available.**

**Super compact machine mounted on 6x4 4200/4500\* wheelbase trucks for excellent maneuverability.**

**Contained stabilisation dimensions for easy placement in all types of job sites.**

### Control System with pumping unit HP1608EC

#### Smartronic Silver

Integrated color LCD

Counters

Pumping unit management

Diagnostics

Capsense rear panel

#### Optional Smartronic Gold



The automatic continuous verification of the center of gravity of the machine guarantees the maximum safety of boom movement and the maximum possible coverage of the job area, even with partial opening of the stabilization.



**MBE**  
**Maximum boom**  
**extension control**



**Automatic**  
**RPM**  
**Management**

### Control System with pumping unit HP1606H

#### Easytronic Silver

Integrated color LCD

Counters

Pumping unit management

Diagnostics

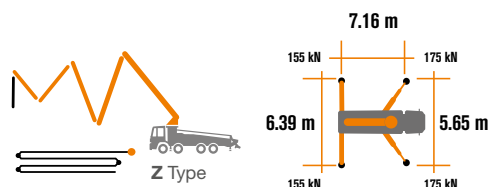
#### Optional Easytronic Gold



Lsc Safe boom operation is guaranteed when two, three or four outriggers are fully opened.



**Automatic**  
**RPM**  
**Management**



### Placing boom technical data

		B5Z 31/27
Pipeline diameter	mm	125
Max. vertical reach	m	30.2
Max. horizontal distance (from center of slewing axis)	m	25.6
Min. unfolding height	m	5.5
Sections number		5
1st section opening angle		90°
2nd section opening angle		180°
3rd section opening angle		236°
4th section opening angle		180°
5th section opening angle		continuous
Rotating angle		+/-270°
End hose	m	3



STEELTECH Series

# K31L

## Standard Equipment

Front "X" style outriggers for a quick set-up and easy pump placement in narrow areas

Driven by PTO or gear box

Boom control by means of "Load Sensing" proportional distributor

Safety device upon opening of concrete discharge door and hopper grille

Emergency device for pumping group

2 Hetronic proportional radio controls with 3 manipulators

Emergency radio control cable 20 m

Plastic water tank with 600-litre capacity

Medium pressure water pump (50 l/min - 50 bar)

LED lights for stabilisation and hopper lighting

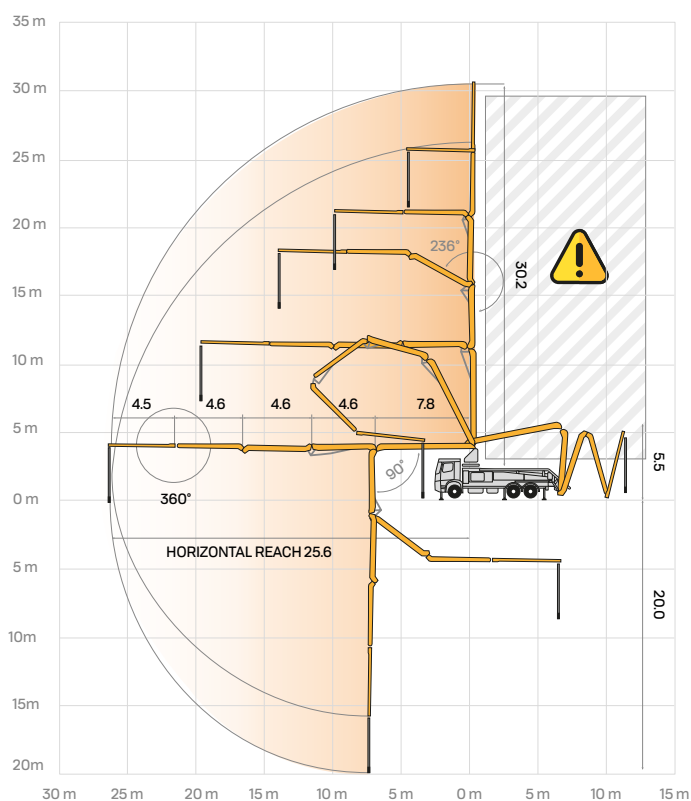
Double layer piping with chromium carbide inserts on the entire piping line

Washing accessories

High resistance of the components most subject to wear ("S" valve, wear plate, compensating ring)

Declaration of conformity supplied with the user and maintenance manual

## Distribution boom B5Z 31/27



## Main Options

Smartronic Gold (Smartronic Silver + ASC Advanced Stability Control)

Easytronic Gold (Easytronic Silver + LSC Light Stability Control)

Automatic boom opening and closing

Centralized boom lubrication system

Concrete shut-off valve

High pressure water pump (15l/min - 150 bar)

Radio remote control: Hetronic or HBC equipped with display

Straight concrete piping on double layer boom with high wear-resistance chromium carbide inserts CIFA LLT Long Life Top

Wide choice of customer personalization colours

End hose length of 2.5 + 1 m

**\*Over 100 options available; details available on truck pumps optional booklet**

Smartronic Video

