



max  
4000

3900/4200

< 10000

\* Technical data and features subject to change without notice

### Pumping unit technical data

		HP908EC	HP1608EC
Max. theoretical output	m³/h	95	160
Max. pressure on concrete	bar	80	80
Concrete cylinders (diam. x stroke)	mm	200 x 1650	230 x 2100
Concrete hopper capacity	l	550	550
Hydraulic circuit		closed	closed

Super compact machine mounted on 6x4 3900/4200\* mm wheelbase trucks for excellent maneuverability.

Contained stabilisation dimensions for easy placement in all types of job sites.

Wide platforms up to 4.2 m on both sides ("pipe storage" optional).

### Control System with pumping unit HP908EC | HP1608EC

#### Smartronic

Integrated color LCD

Counters

Pumping unit management

Diagnostics

Capsense rear panel

#### Optional Smartronic Plus



The automatic continuous verification of the center of gravity of the machine guarantees the maximum safety of boom movement and the maximum possible coverage of the job area, even with partial opening of the stabilization.



**MBE**  
Maximum boom  
extension control



**Automatic**  
**RPM**  
Management

#### Optional Smartronic Pro

Automatic boom folding/unfolding

ASC 2.0

Boom antibouncing system

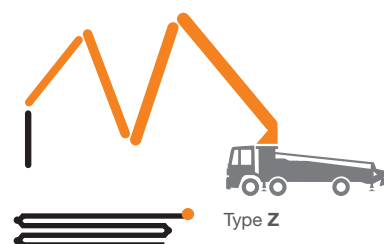
Radio remote control with display

Virtual span

Angle fence

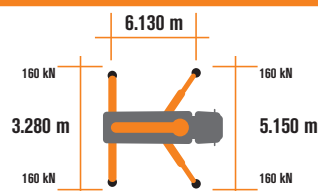
Section block

Constant height



### Placing boom technical data

		4Z
Pipeline diameter	mm	125
Max. vertical reach	m	27.7
Max. horizontal distance (from center of slewing axis)	m	23.4
Min. unfolding height	m	6.2
Sections number		4
1st section opening angle		90°
2nd section opening angle		180°
3rd section opening angle		254°
4th section opening angle		255°
Rotating angle		+/-270°
End hose	m	3





STEELTECH 20m Series

# K28L

## Standard Equipment

Front "X" style outriggers for a quick set-up and easy pump placement in narrow areas

Driven by PTO or gear box

Boom control by means of proportional distributor

Safety device upon opening of concrete discharge door and hopper grille

Emergency device for pumping group

2 Hetronic proportional radio controls with 3 manipulators

Emergency radio control cable 20 m

Water tank with 600-litre capacity (plastic)

Medium pressure water pump (50 l/min - 50 bar)

LED lights for stabilisation and hopper lighting

Double layer piping with chromium carbide inserts on the entire piping line

Washing accessories

High resistance of the components most subject to wear ("S" valve, wear plate, compensating ring)

Declaration of conformity supplied with the user and maintenance manual

## Main Options

Smartronic Plus (Smartronic + ASC Advanced Stability Control)

**Smartronic Pro:** In addition to the Smartronic Plus functions, provides ASC2.0 stability control, ABC boom oscillation control (Antibouncing), Virtual span, Angle Fence, Section block and Constant height. Includes radioremotely controlled display.

Automatic boom opening and closing

V-Stop

Centralized boom lubrication system

Concrete shut-off valve

High pressure water pump (150 bar - 15 l/min)

Radio remote control: Hetronic or HBC equipped with display

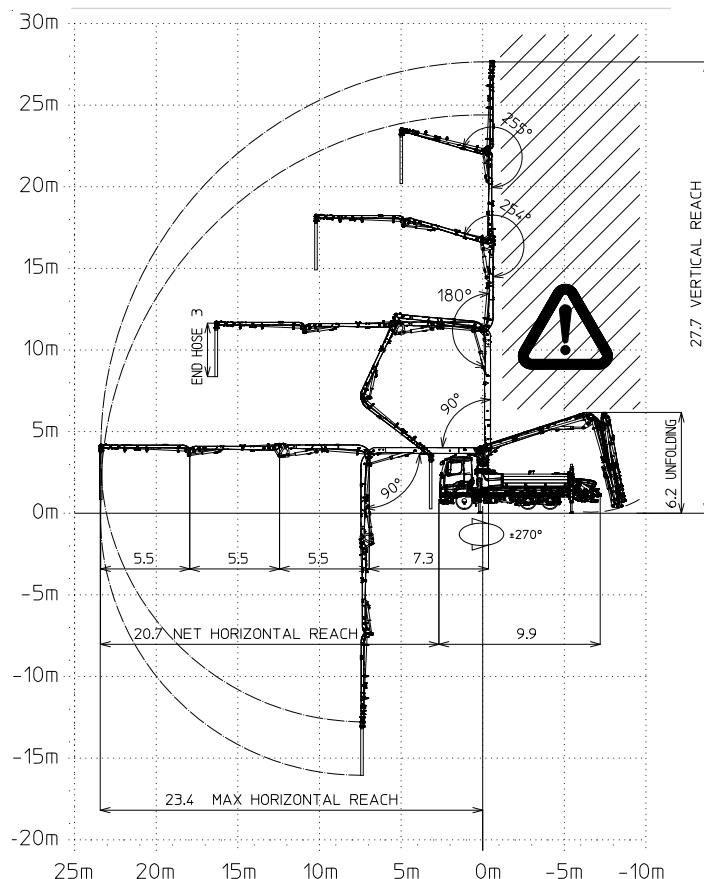
Straight concrete piping on double layer boom with high wear-resistance chromium carbide inserts CIFA LLT Long Life Top

Wide choice of customer personalization colours

End hose length of 2.5 + 1 m

**\*Over 100 options available; details available on truck pumps optional booklet**

## Distribution boom 4Z



## Optional Smartronic Pro



**Advanced Stability Control 2.0**



**Antibouncing**



**Boom Automatic Opening and Closing**



**Virtual span**



**Angle fence**



**Section block**



**Constant height**

Smartronic Video

