



* Technical data and features subject to change without notice

Pumping unit technical data

		HP908EC
Max. theoretical output	m ³ /h	95
Max. pressure on concrete	bar	80
Concrete cylinders (diam. x stroke)	mm	200 x 1650
Concrete hopper capacity	l	550
Hydraulic circuit		closed

Super compact machine mounted on 4x2 4200/4500* mm wheelbase trucks for excellent maneuverability.

Contained stabilisation dimensions for easy placement in all types of job sites.

Wide platforms up to 3.4 m on both sides ("pipe storage" optional).

Control System with pumping unit HP908EC

Smartronic

Integrated color LCD

Counters

Pumping unit management

Diagnostics

Capsense rear panel

Optional Smartronic Plus



The automatic continuous verification of the center of gravity of the machine guarantees the maximum safety of boom movement and the maximum possible coverage of the job area, even with partial opening of the stabilisation.



MBE
Maximum boom
extension control



Automatic
RPM
Management

Optional Smartronic Pro

Automatic boom folding/unfolding

ASC 2.0

Boom antibouncing system

Radio remote control with display

Virtual span

Angle fence

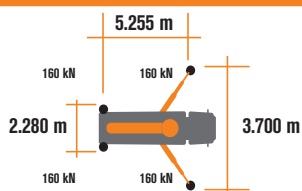
Section block

Constant height



Placing boom technical data

		4ZR
Pipeline diameter	mm	125
Max. vertical reach	m	20
Max. horizontal distance (from center of slewing axis)	m	15,7
Min. unfolding height	m	4,1
Sections number		4
1st section opening angle		90°
2nd section opening angle		180°
3rd section opening angle		253°
4th section opening angle		253°
Rotating angle		+/-270°
End hose	m	3





STEELTECH 20m Series

K20L

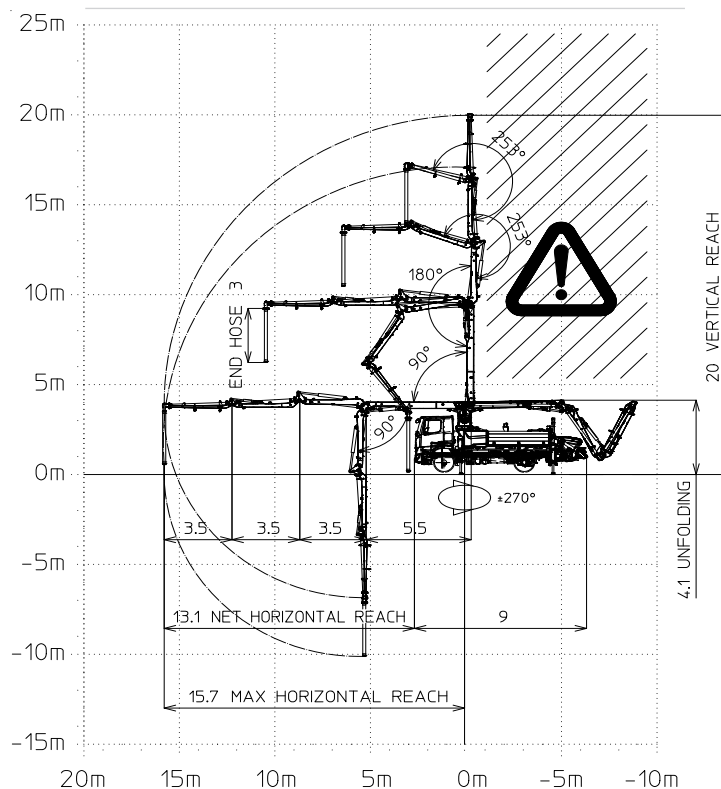
Standard Equipment

- Front "X" style outriggers for a quick set-up and easy pump placement in narrow areas
- Driven by PTO or gear box
- Boom control by means of proportional distributor
- Safety device upon opening of concrete discharge door and hopper grille
- Emergency device for pumping group
- 2 Hetronic proportional radio controls with 3 manipulators
- Emergency radio control cable 20 m
- Water tank with 600-litre capacity (plastic)
- Medium pressure water pump (50 l/min - 50 bar)
- LED lights for stabilisation and hopper lighting
- Double layer piping with chromium carbide inserts on the entire piping line
- Washing accessories
- High resistance of the components most subject to wear ("S" valve, wear plate, compensating ring)
- Declaration of conformity supplied with the user and maintenance manual

Main Options

- Smartronic Plus (Smartronic + ASC Advanced Stability Control)
- Smartronic Pro:** In addition to the Smartronic Plus functions, provides ASC2.0 stability control, ABC boom oscillation control (Antibouncing), Virtual span, Angle Fence, Section block and Constant height. Includes radioremotely controlled display.
- Automatic boom opening and closing
- V-Stop
- Centralized boom lubrication system
- Concrete shut-off valve
- High pressure water pump (150 bar - 15 l/min)
- Radio remote control: Hetronic or HBC equipped with display
- Straight concrete piping on double layer boom with high wear-resistance chromium carbide inserts CIFA LLT Long Life Top
- Wide choice of customer personalization colours
- End hose length of 3 m
- *Over 100 options available; details available on truck pumps optional booklet**

Distribution boom 4ZR



Optional Smartronic Pro



Advanced
Stability Control 2.0



Antibouncing



Boom Automatic
Opening and Closing



Virtual span



Angle fence



Section block



Constant height

Smartronic Video

